

# Program Assessment Rating Tool (PART)



## PART 101 INTRODUCTORY TRAINING

Office of Management and Budget

February 2007

# Welcome

- Purpose of Training
- How the session will be organized
- Your Trainers
- All information is provided in the PART Guidance at [www.omb.gov/part](http://www.omb.gov/part)

# Overview – First Half

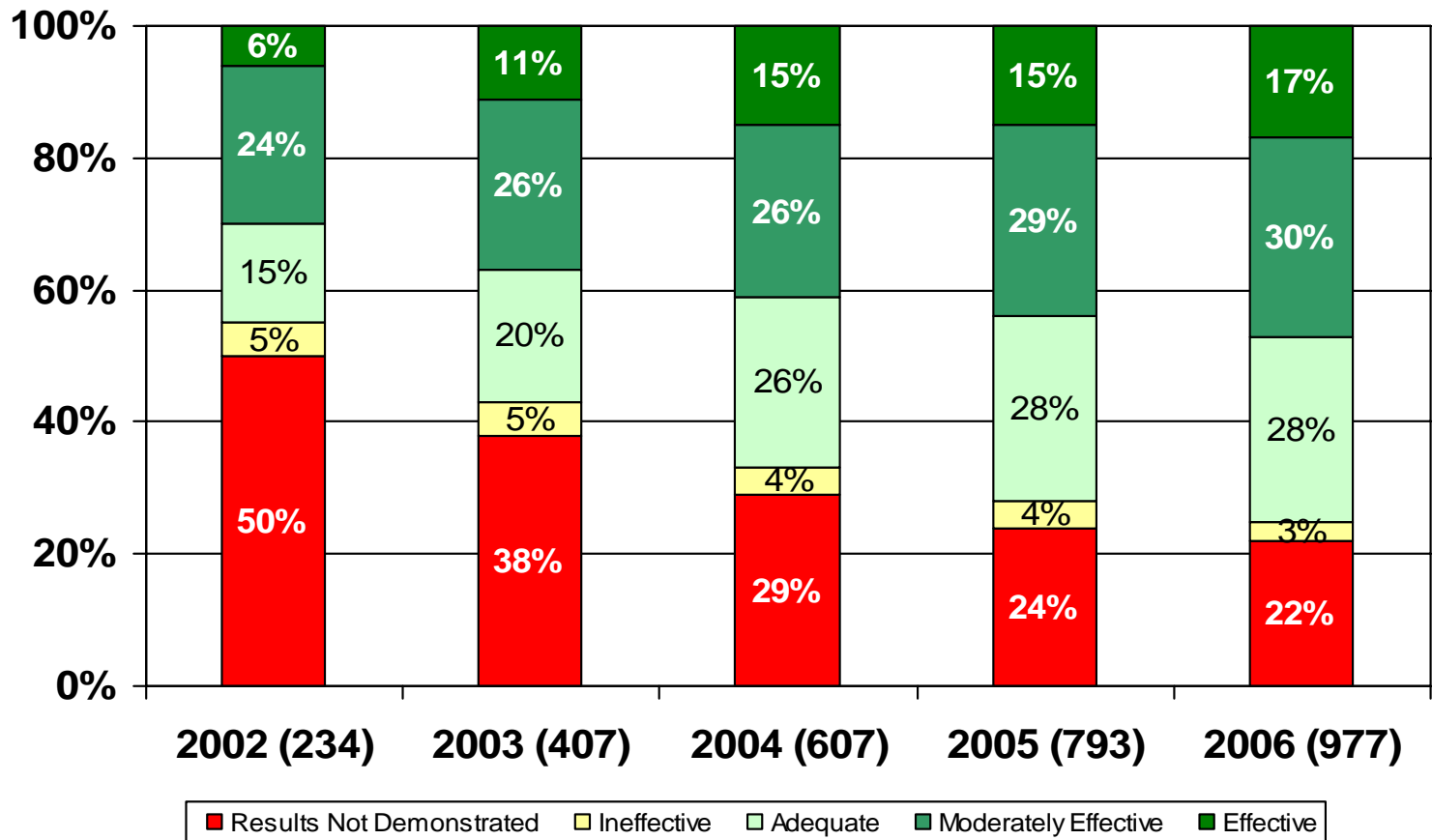
- **Why PART?**
- **Where We Are Now**
- **PARTWeb and ExpectMore.gov**
- **The PART Guidance**
- **Schedule**

# Why PART?

- Evaluate programs in a systematic, consistent, and transparent manner.
- Inform agency and OMB decisions on resource allocations.
- Focus on program improvements that can include specific actions related to management, legislative or regulatory improvements, and funding.
- Establish accountability for performance.
- PART strengthens and reinforces GPRA-mandated performance reporting.

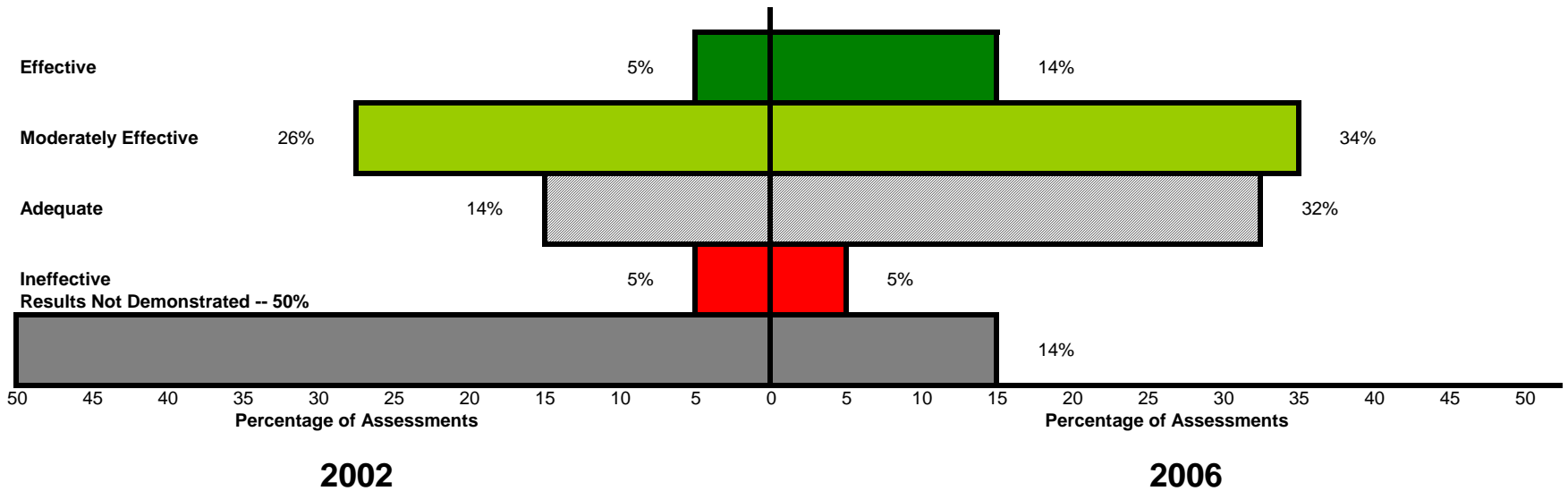
# Where We Are Today

## Distribution of Cumulative Ratings 2002 - 2006



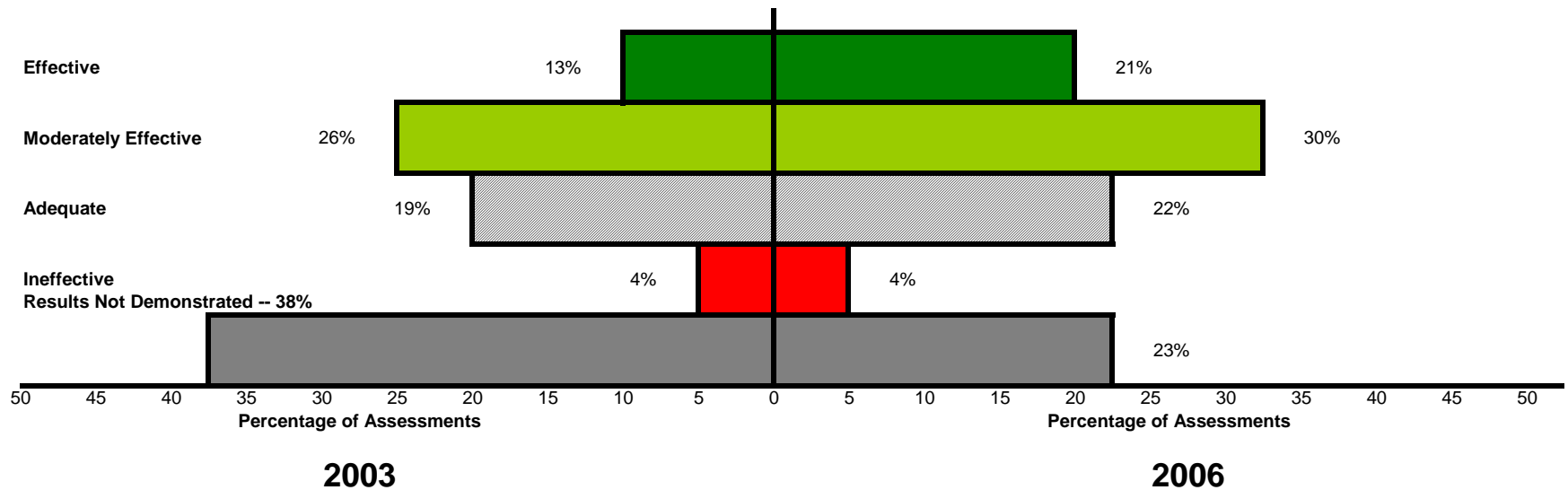
# Programs Improve

Distribution of 2006 PART Ratings of Programs Initially Assessed in 2002



# Programs Improve

Distribution of 2006 PART Ratings of Programs Initially Assessed in 2003



# **PART Scores and Ratings (p. 62)**

- **Answers to questions generate scores which are weighted to tally a total score.**
- **Ratings based on total scores: Effective, Moderately Effective, Adequate, Ineffective.**
- **Results Not Demonstrated assigned to programs that do not have performance measures or data, regardless of overall score.**



# How Do I Get Started? (pp. 4-7)

- Determine the Program Type
  - Block/Formula Grant
  - Capital Assets and Service Acquisition
  - Competitive Grant
  - Credit
  - Direct Federal
  - Regulatory-based
  - Research & Development
- Flag potential issue with questions: weights and those not applicable

# How is an Assessment completed?

- **Close, cooperative OMB and Agency Staff participation.**
- **Process for completing PART questionnaire varies from agency to agency**
  - **Kick-Off**
  - **Review of Agency Draft Responses**
  - **Iterative/Collaborative Process**
- **Evidence is required for “Yes” answers**



OFFICE OF  
MANAGEMENT AND BUDGET



PARTWeb is the online system used to enter PART answers and evidence, performance data, and follow-up actions.

Expect**More**.gov

ExpectMore.gov provides the public access to PARTs and PART Summaries.

PARTWeb generates PART Summaries for ExpectMore.gov.



# PARTWeb Answers Entry Screen

Is the program purpose clear? - Microsoft Internet Explorer

File Edit View Favorites Tools Help

Back Search Favorites

Address <https://max.omb.gov/app/part/program/assessment/question-answers/answer-question?pid=1722&aid=2839&aaid=134750>

 OFFICE OF MANAGEMENT AND BUDGET 

PARTWeb v3.0.4

- Search for a Program in PARTWeb
- Register New Program Assessment in PARTweb
- ExpectMore.gov Batch Report
- Nuclear Physics
  - Edit Program
  - User Permissions
  - Create New Assessment
  - 2005 Update Assessment
    - Edit Assessment
    - Fall Updates
    - PART Summary
    - Funding Accounts
    - Question Answers
      - ▶ Answer Question 1.1
    - Question Weights
    - Performance Measures
    - Follow-up Actions
  - Administration
    - Users
    - Import Program
  - Change Password
  - PARTWeb How-to's
  - Contact Us
  - Logout

User: Program: **Nuclear Physics (10000114)** Assessment: **2005 Update** Exec Office of the Pre

## Is the program purpose clear?

**DIRECT FEDERAL PROGRAM QUESTION 1.1**

Answer ▶  Yes  No

Explanation ▶ The mission of the Nuclear Physics (NP) program is to foster fundamental research in nuclear physics that will provide new insights and advance our knowledge on the nature of matter and energy and develop the scientific knowledge, technologies and trained manpower that are needed to underpin DOE missions.

Evidence ▶ FY04 Budget Request ([www.mbe.doe.gov/budget/04budget/index.htm](http://www.mbe.doe.gov/budget/04budget/index.htm)). Public Law 95-91 that established the Department of Energy (DOE). The NP Mission has been validated by the Nuclear Science Advisory Committee (NSAC).

Previous versions: None.

1.1 Is the program purpose clear?

Purpose of the question: to determine whether the program has a focused and well-defined mission.

Elements of a Yes answer: a Yes answer would require a consensus of program purpose among interested parties (e.g., Congress, Administration, public) and a clear and unambiguous mission. Considerations can include whether the program purpose can be stated succinctly. A No answer would be appropriate if the program has multiple conflicting purposes.


# PARTWeb Performance Measures Entry Screen

Prison Construction 2005 Update Assessment - Microsoft Internet Explorer


File Edit View Favorites Tools Help

Back Search Favorites

Address: https://max.omb.gov/app/part/program/assessment/measures?aid=2592&pid=363



OFFICE OF  
**MANAGEMENT AND BUDGET**



User: HURBAN, JAMESOMBADMIN  
 Program: Prison Construction (10003803)  
 Assessment: 2005 Update

Exec Office of the President

## Prison Construction 2005 Update Assessment

**PRISON CONSTRUCTION 2005 PERFORMANCE MEASURES**

[Add Performance Measure](#)

Term	Type	Text	<a href="#">Edit</a> <a href="#">Delete</a>																																												
Long-term	Efficiency	Construction Cost per bed for Medium Security Facilities.	<a href="#">Edit</a> <a href="#">Delete</a>																																												
			<table border="1" style="width: 100%; border-collapse: collapse;"> <thead> <tr> <th>Year</th> <th>Target</th> <th>Actual</th> <th>State</th> </tr> </thead> <tbody> <tr><td>2004</td><td>Baseline</td><td>\$74,513</td><td></td></tr> <tr><td>2005</td><td>\$76,078</td><td>n/a</td><td></td></tr> <tr><td>2006</td><td>\$81,300</td><td></td><td></td></tr> <tr><td>2007</td><td>\$79,307</td><td></td><td></td></tr> <tr><td>2008</td><td>\$84,750</td><td></td><td></td></tr> <tr><td>2009</td><td>\$86,530</td><td></td><td></td></tr> <tr><td>2010</td><td>\$88,347</td><td></td><td></td></tr> <tr><td>2011</td><td>\$90,203</td><td></td><td></td></tr> <tr><td>2012</td><td>\$92,097</td><td></td><td></td></tr> <tr><td>2013</td><td>\$94,031</td><td></td><td></td></tr> </tbody> </table>	Year	Target	Actual	State	2004	Baseline	\$74,513		2005	\$76,078	n/a		2006	\$81,300			2007	\$79,307			2008	\$84,750			2009	\$86,530			2010	\$88,347			2011	\$90,203			2012	\$92,097			2013	\$94,031		
			Year	Target	Actual	State																																									
			2004	Baseline	\$74,513																																										
			2005	\$76,078	n/a																																										
			2006	\$81,300																																											
			2007	\$79,307																																											
			2008	\$84,750																																											
			2009	\$86,530																																											
			2010	\$88,347																																											
			2011	\$90,203																																											
			2012	\$92,097																																											
			2013	\$94,031																																											
Long-term	Efficiency	Percent of Modernization and Repair Projects completed on time.	<a href="#">Edit</a> <a href="#">Delete</a>																																												
			<table border="1" style="width: 100%; border-collapse: collapse;"> <thead> <tr> <th>Year</th> <th>Target</th> <th>Actual</th> <th>State</th> </tr> </thead> <tbody> <tr><td>2004</td><td>Baseline</td><td>41%</td><td></td></tr> <tr><td>2005</td><td>65%</td><td>90%</td><td></td></tr> <tr><td>2006</td><td>75%</td><td></td><td></td></tr> <tr><td>2007</td><td>85%</td><td></td><td></td></tr> <tr><td>2008</td><td>95%</td><td></td><td></td></tr> <tr><td>2009</td><td>95%</td><td></td><td></td></tr> <tr><td>2010</td><td>95%</td><td></td><td></td></tr> <tr><td>2011</td><td>95%</td><td></td><td></td></tr> <tr><td>2012</td><td>95%</td><td></td><td></td></tr> <tr><td>2013</td><td>95%</td><td></td><td></td></tr> </tbody> </table>	Year	Target	Actual	State	2004	Baseline	41%		2005	65%	90%		2006	75%			2007	85%			2008	95%			2009	95%			2010	95%			2011	95%			2012	95%			2013	95%		
			Year	Target	Actual	State																																									
			2004	Baseline	41%																																										
			2005	65%	90%																																										
			2006	75%																																											
			2007	85%																																											
			2008	95%																																											
			2009	95%																																											
			2010	95%																																											
			2011	95%																																											
			2012	95%																																											
			2013	95%																																											
Annual	Outcome	Critical Systems Equipment Replacements in Accordance with Industry Standards.	<a href="#">Edit</a> <a href="#">Delete</a>																																												
			<table border="1" style="width: 100%; border-collapse: collapse;"> <thead> <tr> <th>Year</th> <th>Target</th> <th>Actual</th> <th>State</th> </tr> </thead> <tbody> <tr><td>2004</td><td>Baseline</td><td>15%</td><td></td></tr> <tr><td>2005</td><td>20%</td><td>27%</td><td></td></tr> <tr><td>2006</td><td>30%</td><td></td><td></td></tr> <tr><td>2007</td><td>40%</td><td></td><td></td></tr> <tr><td>2008</td><td>50%</td><td></td><td></td></tr> <tr><td>2009</td><td>70%</td><td></td><td></td></tr> </tbody> </table>	Year	Target	Actual	State	2004	Baseline	15%		2005	20%	27%		2006	30%			2007	40%			2008	50%			2009	70%																		
			Year	Target	Actual	State																																									
			2004	Baseline	15%																																										
			2005	20%	27%																																										
			2006	30%																																											
			2007	40%																																											
			2008	50%																																											
			2009	70%																																											

**PARTWeb v3.0.7**

- Search for a Program in PARTWeb
- Register New Program Assessment in PARTweb
- ExpectMore.gov Batch Report
- Prison Construction
  - Edit Program
  - User Permissions
  - Create New Assessment
  - 2005 Update Assessment
    - Edit Assessment
    - Abbreviated Reassessment
    - Fall Updates
    - PART Summary
    - Funding Accounts
    - Question Answers
    - Question Weights
    - ▶ Performance Measures
    - Follow-up Actions
- Reports
  - Rating Summary Report
  - Follow-up Actions Report
  - Measures Report
- Administration
  - Users
  - Import Program
- Change Password
- PARTWeb How-to's
- Contact Us
- Logout



# Expect**More**.gov

EXPECT FEDERAL PROGRAMS TO PERFORM WELL, AND BETTER EVERY YEAR.



Robert Shafer/Brand X Pictures/Getty Images

The Federal Government is working to ensure its **programs perform well**. Here we provide you information about where we're **successful** and where we **fall short**, and in both situations, what we're doing to **improve our performance** next year.

[Learn More](#) 

▶ Show me programs that are **PERFORMING** [GO](#)

▶ Show me programs that are **NOT PERFORMING** [GO](#)

▶ Show me programs by **NAME** or **KEYWORD** [GO](#)

▶ Show me programs by **TOPIC** [GO](#)

▶ Show me programs by **AGENCY** [GO](#)

The content on ExpectMore.gov is developed by the U.S. Office of Management and Budget and Federal agencies.

# ExpectMore.gov Summary

[Home](#)

[About Us](#)

[Contact](#)

[What's New](#)

## ExpectMore.gov

EXPECT FEDERAL PROGRAMS TO PERFORM WELL, AND BETTER EVERY YEAR.

Getty Images

[Show Me Programs](#)



### PROGRAM

[View Assessment Details](#)

### RATING

[What This Rating Means](#)

### IMPROVEMENT PLAN

[About Improvement Plans](#)

## PROGRAM ASSESSMENT

### Early Reading First

The Early Reading First (ERF) program is designed to implement research-based early literacy programs in already existing preschool programs to enhance the early language, literacy, and prereading development of preschool-aged children.

#### PERFORMING

#### ☆☆ Moderately Effective

- **The program addresses a compelling need.** Studies show that a high percentage of children from low-income families attend preschools that often fail to provide the language, cognitive, and early reading instruction and activities needed. The Early Reading First program is intended to address the gaps in quality between low-income children and their peers of higher socioeconomic status.
- **The program is reaching its original performance targets.** The percentage of preschool-aged children participating in ERF programs who demonstrated age-appropriate oral language skills increased from 56 percent in 2004 to 67.9 percent in 2005.
- **The Department of Education has recently established new performance measures in the areas of significant literacy gains and program efficiency.**

#### We are taking the following actions to improve the performance of the program:

- Collecting data for the new measures: significant gains in early literacy skills, and the cost per preschool-aged child participating in Early Reading First programs who achieves significant gains.
- Implementing a measure of kindergarten readiness by requiring entities that receive a grant for a second three-year period to collect former participants' academic achievement in kindergarten.
- Updating the recent performance data on the program's website as they become available.

### LEARN MORE

- [View Similar Programs.](#)
- [How all Federal programs are assessed.](#)
- [Learn more about Early Reading First.](#)

# ExpectMore.gov Assessment Details

ExpectMore.gov

## DETAILED INFORMATION ON THE EARLY READING FIRST ASSESSMENT

- [View this program's assessment summary.](#)
- [Visit ExpectMore.gov](#) to learn more about how Federal Government programs are assessed and their plans for improvement.
- [Learn more](#) about detailed assessments.

<b>Program Code</b>	10003322										
<b>Program Title</b>	Early Reading First										
<b>Department Name</b>	Department of Education										
<b>Agency/Bureau Name</b>	Department of Education										
<b>Program Type(s)</b>	Competitive Grant Program										
<b>Assessment Year</b>	2006										
<b>Assessment Rating</b>	Moderately Effective										
<b>Assessment Section Scores</b>	<table border="1"><thead><tr><th>Section</th><th>Score</th></tr></thead><tbody><tr><td>Program Purpose &amp; Design</td><td>100%</td></tr><tr><td>Strategic Planning</td><td>88%</td></tr><tr><td>Program Management</td><td>100%</td></tr><tr><td>Program Results/Accountability</td><td>58%</td></tr></tbody></table>	Section	Score	Program Purpose & Design	100%	Strategic Planning	88%	Program Management	100%	Program Results/Accountability	58%
Section	Score										
Program Purpose & Design	100%										
Strategic Planning	88%										
Program Management	100%										
Program Results/Accountability	58%										
<b>Program Funding Level (in millions)</b>	<table border="1"><tbody><tr><td><b>FY2006</b></td><td>\$103</td></tr><tr><td><b>FY2007</b></td><td>\$103</td></tr><tr><td><b>FY2008</b></td><td>\$118</td></tr></tbody></table>	<b>FY2006</b>	\$103	<b>FY2007</b>	\$103	<b>FY2008</b>	\$118				
<b>FY2006</b>	\$103										
<b>FY2007</b>	\$103										
<b>FY2008</b>	\$118										

- [Program Improvement Plans](#)
- [Program Performance Measures](#)
- [Questions/Answers \(Detailed Assessment\)](#)

## Program Improvement Plans

Year Began	Improvement Plan	Status	Comments
2006	Collecting data for the new measures: significant gains in early literacy skills, and the cost per preschool-aged child participating in Early Reading First programs who achieves significant gains.	Action taken, but not completed	
2006	Implementing a measure of kindergarten readiness by requiring entities that receive a grant for a second three-year period to collect former participants' academic achievement in kindergarten.	No action taken	
2006	Updating the grantee performance data on the program's website as data become available.	Action taken, but not completed	

## Program Performance Measures



# PART Questions

- **Grouped into four sections**
  - **I. Program Purpose and Design (20%)**
  - **II. Strategic Planning (10%)**
  - **III. Program Management (20%)**
  - **IV. Results (50%)**

# **Section I: Program Purpose and Design**

## **(pp. 16-22)**

- **20% weight of the total PART score**
- **Clarity and relevance of program purpose**
- **Soundness of program design**
- **Addresses program's structural issues**
- **Clear design and purpose an essential for identifying performance measures**
- **Question 1.4 (Design Flaws) requires evidence to justify a "No" (p. 18)**

# **Section II: Strategic Planning**

## **(pp. 23-37)**

- **10% weight on the total PART score with linkages to Section IV questions**
- **Addresses program's plans and approach to achieve specific long-term goals**
- **Programs must have long-term and annual performance measures**
- **Programs must have ambitious targets**
- **Evaluation of program effectiveness and to support performance improvement**

# **Section III: Program Management**

## **(pp. 38-54)**

- **Addresses elements related to managing a program to achieve performance goals**
  - **Accountability of managers, performance of partners**
  - **Coordination with related programs**
  - **Financial management, improving efficiency**
  - **Addressing deficiencies**
- **To get a “Yes” on Question 3.4, programs must have procedures in place to measure and achieve efficiencies and cost effectiveness**
- **20% weight on the total PART score**

# **Section IV:**

## **Program Results/Accountability**

**(pp. 55-61)**

- **Assesses the extent to which a program is achieving its long-term and annual performance goals and efficiency goals**
- **Reporting of actual performance compared to targets (identified in Sections II and III)**
- **Effectiveness in achieving goals based on independent evaluations**
- **Comparison of performance with similar programs**
- **50% weight on the total PART score**

# PART Question Linkages (p. 14)

Required PART Question Linkages							
	Q2.2	Q2.3	Q2.4	Q2.5	Q4.1	Q4.2	Q4.3
If Q2.1="no"	Must answer "no"	Must provide explanation of how annual performance goals contribute to long-term outcomes and purpose to receive a "yes"		Must answer "no" if both Q2.1="no" and Q2.3="no"	Must answer "no" if adequate outcome (or output) measures are not available		
If Q2.3="no"			Must answer "no"			Must answer "no"	
If Q2.1="yes" and Q2.2="no"					Not higher than "small extent"		
If Q2.3="yes" and Q2.4="no"						Not higher than "small extent"	
If Q.3.4="no"							Must answer "no"

# 2007 PART Schedule (p. vii)

- Agencies Complete PART Drafts by March 30<sup>th</sup>.
- Consistency Check and Review of Performance Measures – April 30<sup>th</sup> to May 4<sup>th</sup>.
- Appeals due by May 25<sup>th</sup>.
- Complete PART Summaries & Improvement Plans for ExpectMore.gov July 9<sup>th</sup>.
- Data Entry Locked on August 3<sup>rd</sup>.
- PARTs published on ExpectMore.gov in mid-August.

# Performance Measures (pp. 7-11)

(Questions 2.1-2.4, 4.1-4.2)

- **Outcome**
- **Output**
- **Efficiency** (In addition questions 3.4, 4.3)
  - **Outcome efficiency**
  - **Output efficiency**
  - **Input productivity**



# Outcome & Output Performance Measures (pp. 7-8)

**Outcomes** – Events or conditions external to the program and of direct importance to the public, beneficiaries and/or customers. They relate to the program's mission, purpose and strategic goals.

**Outputs** – Internal program activities; products and services delivered to the public, beneficiaries.

# Efficiency Measures

- Reflect economical and effective acquisition, utilization, and management of resources to achieve program outcomes or produce program outputs.
- Can also reflect improved design, creation, and delivery of goods and services.

# Efficiency Measures

- **Outcome efficiency**
  - Preferred type of performance measure that captures improvement in efficiency with respect to a program's outcomes.
- **Output efficiency**
  - Performance measure that captures improvement in efficiency with respect to a program's outputs.
- **Input productivity**
  - Ratio of an outcome or output to an input.

# Efficiency Measures

- **PART requirements:**
  - **Outcome efficiency measures should consider the benefit to the customer.**
  - **Output efficiency measures should reflect efficient resource use rather than other changes.**
  - **Measures that involve a baseline, standard, or benchmark must have a history of changes.**
  - **Include inputs for Federal and non-Federal resources for programs that combine them.**

# **Output Efficiency Measures Fiscal Year Comparison (Appendix D)**

- **In comparisons of among time periods, output efficiency measures are only valid when the outputs intended to be produced within each time period are comparable.**
- **The PART requires an assessment of the comparability of an input productivity measure when it is used as output efficiency measures.**

# Performance Goals (pp. 11-12)

- **Targets – Improved level of performance needed to achieve stated goals.**
- **The PART requires programs to have ambitious but realistic, achievable targets and timeframes for performance measures. (also Questions 2.2, 2.4, 3.4)**
- **Together, the measures, targets and timeframes establish the program's performance goals.**

# Performance Goals (pp. 11-12)

$$\text{Performance Goal} = \text{Performance Measure} + \text{Ambitious Target}$$

- **Considerations for target-setting**
  - Past performance (baseline)
  - Legislative changes
  - Funding
  - External factors

# Program Evaluations

- **Scope** - Examine the underlying cause and effect relationship between the program and achievement of performance targets.
- **Independence** - Performed by non-biased parties with no conflict of interest should conduct the evaluations. (TBD by agency and OMB staff.)
- **Quality**
  - **Applicability** – All programs expected to undergo some type of evaluation.
  - **Impact** – Prefer effectiveness evaluations consider a program's impact (outcome, e.g., whether the Federal intervention makes a difference).
  - **Rigor** – Provide the most rigorous evidence that is appropriate and feasible for that program.



# Quality Program Evaluation

- Can a program demonstrate impact?
  - If Yes - randomized controlled trials are generally the highest quality, unbiased evaluation to demonstrate actual impact, but only when it is appropriate and feasible to conduct such studies.
  - If No - a variety of quasi-experimental methods (e.g., comparison group studies) and non-experimental methods may help shed light on *how or why* a program is effective.
  - Bottom line - Evaluations must be appropriate to the type of program.

# Does It Ever End?

- **Steps after PARTs are completed**
  - **Draft summaries for ExpectMore.gov**
  - **Spring Updates in PARTWeb**
  - **Complete Improvement Plans**
    - All programs must have regardless of PART rating
    - Focus on the findings in the PART assessment
    - Implement plans and report on progress
  - **ExpectMore.gov release mid-August**

# Lessons to Learn Quickly

- **Share drafts, communicate frequently to plan and coordinate.**
- **Use clear, direct language in explanations and evidence.**
- **Stick to the deadlines.**
- **Don't take the PART personally.**
- **Rely on evidence, not anecdotes.**
- **Speed the process -- don't flood OMB with mounds of "evidence". Point out exactly where the evidence is any document.**

# Resources on PART

- [www.omb.gov/part](http://www.omb.gov/part)
  - Information on process and schedule
  - Guidance for completing PART
  - PARTWeb link, user's manual
  - Supporting materials
- [www.ExpectMore.gov](http://www.ExpectMore.gov)

# PROGRAM ASSESSMENT RATING TOOL



## Questions and Answers